

**START NOW!**

**SMART SHUTTER CONTROL  
FOR INCREASED  
COMFORT & SECURITY**

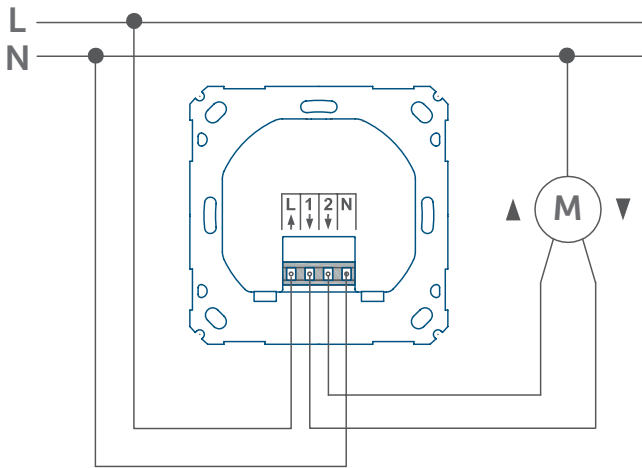
# Starter Set Shutter Control

HmIP-SK5

The starter set shutter control offers smart retrofitting of electric shutters in just a few steps. The shutter actuators can be easily integrated into existing switch series and conveniently controlled either by smartphone, automatically with a time profile or, as usual, by push-button.



**homematic** **IP**  
Smart Living, Simply Exciting.



For installation, a neutral conductor is required.

## SMART CONTROL AT ALL TIMES

Operate the shutters the way you want: Adjustable time profiles allow shutters to move up or down automatically. Thus, they are adapted to the daily routine of the user.

You can then control your shutters either on the move via smartphone, manually using the installed push-buttons or even via voice control.

## SHUTTER CONTROL DEPENDING ON THE SUN POSITION

Wake up feeling relaxed in the morning or secure your home in the evening: Shutters can be controlled automatically in accordance with the sunrise and sunset.

## INVISIBLE INSTALLATION INTO EXISTING DESIGNS

Can also be integrated into existing switches by making use of existing frames and rockers. With the appropriate adapter, the device can be integrated into the most popular switch designs of leading manufacturers (an overview of compatible manufacturers is available at [www.homematic-ip.com](http://www.homematic-ip.com)).

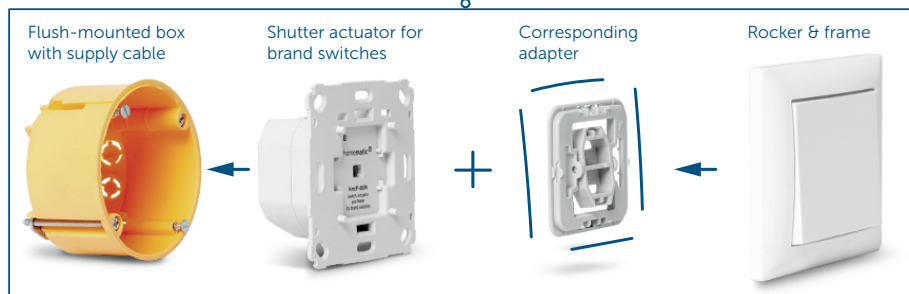
## INCREASE YOUR SECURITY

Shutters are moved down when it is getting dark or if you are absent – this secures windows and doors in the house and suggests presence at the same time.

## GET STARTED AND ENJOY THE SMART CONTROL

Quick and easy start-up of the Access Point: Establish power supply, connect it to the router, download the app – that's it!

Calibration of the shutter actuator is carried out automatically via the calibration run in the app. With its compact design, the actuator fits into standard flush-mounted boxes. Suitable for all standard tube motors.



## TECHNICAL SPECIFICATIONS

### Access Point:

Supply voltage	power supply unit (5 Vdc)
Ambient temperature	5 to 35 °C
Dimensions (W x H x D)	118 x 104 x 26 mm
Typical open area RF range	400 m

### Shutter Actuator for brand switches:

Supply voltage	230 V/50 Hz
Max. switching capacity	500 W
Load type	motor load
Ambient temperature	0 to 50 °C
Dimensions (W x H x D)	71 x 71 x 37 mm
Typical open area RF range	220 m

For further technical details and information, please refer to the data sheet of the respective device.

## EASY ENTRY INTO THE SMART HOME WORLD

Flexible extension to a comprehensive smart home is possible at any time thanks to the large Homematic IP product range. In this way, various additional functions like lock-out and heat protection can be realised.

## LOGISTICAL DATA

Product reference	151670A0
EAN code	4047976516704
Short description	HmIP-SK5
Packing unit	6
Packing dimensions	325 x 159 x 106 mm
Weight incl. packaging	1088.4 g

## PACKAGE CONTENTS

Homematic IP Access Point (plug-in power supply unit, network cable)  
Shutter Actuator for brand switches (2x)  
Mounting accessories  
User manual