

ALWAYS KNOW  
IF THE DOOR IS  
LOCKED OR NOT

# Door Lock Sensor

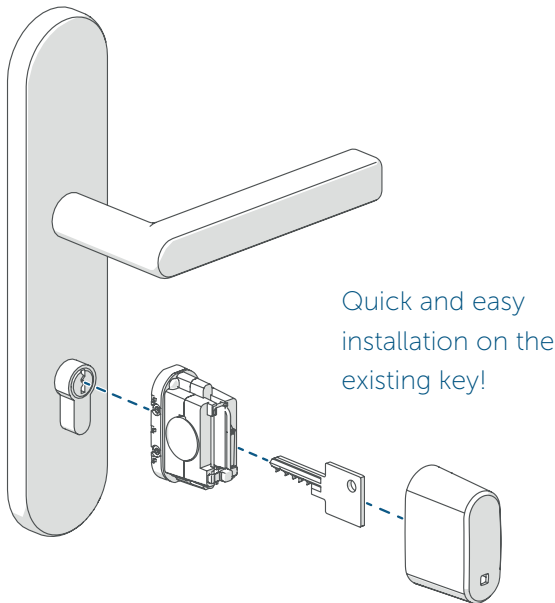
HmIP-DLS

Are you sure the door is locked? Homematic IP provides the answer! This practical door lock sensor always knows whether the door is locked or unlocked – increasing not only security but also convenience in your smart home.



White and silver cover caps included

homematic <sup>IP</sup>  
Smart living. Simply exciting.



## KEEPS AN EYE ON THE DOOR LOCK

Constantly monitored door lock: using the free Homematic IP app, you can always see whether your front door is locked or unlocked. This not only eliminates the need to go to the front door to check, but also ensures your smart home feels safe and secure – whether you are at home or out and about. And, every time the door is locked or unlocked, it is documented in the Homematic IP app's event log.

Using the "secure locking" function in conjunction with a door and window contact, you can tell at any time whether the door is open.



Easily check if your key fits using the key template in our download area.

To enable operation, the device must be connected with one of the following solutions:

- Homematic IP Access Point with free smartphone app and free cloud service
- Third-party partner solutions

## TECHNICAL SPECIFICATIONS

Supply voltage	1x 3 V CR2032
Battery life	2 years (typically)
Degree of protection	IP20
Ambient temperature	5 to 35 °C
Dimensions (W x H x D)	26 x 56 x 38 mm
Weight	38 g (incl. batteries)
Radio frequency band	868.0-868.6 MHz 869.4-869.65 MHz
Typical radio free-field range	210 m

## PROVIDES MORE SECURITY

The door lock sensor can also be integrated into smart security functions. In activated alarm mode, the alarm mode is automatically

- deactivated or an alarm is triggered
- when the door is unlocked.

Integrated position detection means the door lock sensor alerts you immediately via a push message and in the app when the key is removed from the lock.

## QUICK INSTALLATION, WITHOUT DAMAGING THE DOOR

Installation is as straightforward as can be: simply insert your existing key into the door lock sensor – no need to modify the door, the lock cylinder or the key. This makes it easy to retrofit the sensor – perfect for rental flats.

Thanks to its universal design, the door lock sensor fits on all common key types for standard lock cylinders with emergency function.

## TURNS THE KEY INTO A SMART ROTARY KNOB

When combined with the door lock sensor, your existing key is converted into a practical rotary knob in an instant. The key simply turns with the door lock sensor. This means it's still very easy to lock and unlock the door by hand.

## ABSOLUTELY SECURE

The door lock sensor benefits from the VDE-certified protocol, IT and data security of the Homematic IP system.

Another advantage is that, because it is mounted on the inside of the door, the device is not visible from outside.

## LOGISTICS DATA

Product reference	155475A0
EAN code	4047976554751
Short description	HmlIP-DLS
Packing unit	90
Packing dimensions	122 x 112 x 48 mm
Weight incl. packaging	143.3 g

## PACKAGE CONTENTS

Homematic IP Door Lock Sensor
Caps (white and silver)
Allen key
3 V CR2032 battery
Operating manual